



THE SCHOOL BOARD OF BROWARD COUNTY, FLORIDA

2018-2019 ORGANIZATIONAL CHART



THE SCHOOL BOARD OF BROWARD COUNTY, FLORIDA

2018-2019 ORGANIZATIONAL CHART

School Board Appointed Committees & Public Stakeholders	1
Superintendent of Schools/General Counsel	2
Chief School Performance & Accountability Officer	3
Chief Academic Officer	4-7
Early Learning & Language Acquisition	4
Exceptional Student Learning Support	5
Instruction & Interventions	6-7
Chief Student Support Initiatives	8
Chief Auditor	9
Chief Facilities Officer	10
Chief Financial Officer	11
Chief Human Resources & Equity Officer	12
Chief Information Officer	13
Chief Portfolio Services Officer	14
Chief Public Information Officer	15
Chief of Staff	16
Chief Strategy & Operations Officer	17-18
Business Support Center, Grants Administration, Strategic Implementation & Accountability	17
Food & Nutrition Services, Procurement & Warehousing Services, Student Transportation & Fleet Services	18



SCHOOL BOARD APPOINTED COMMITTEES & PUBLIC STAKEHOLDERS

**THE SCHOOL BOARD OF BROWARD COUNTY, FL
2018-2019 ORGANIZATIONAL CHART**

Legend

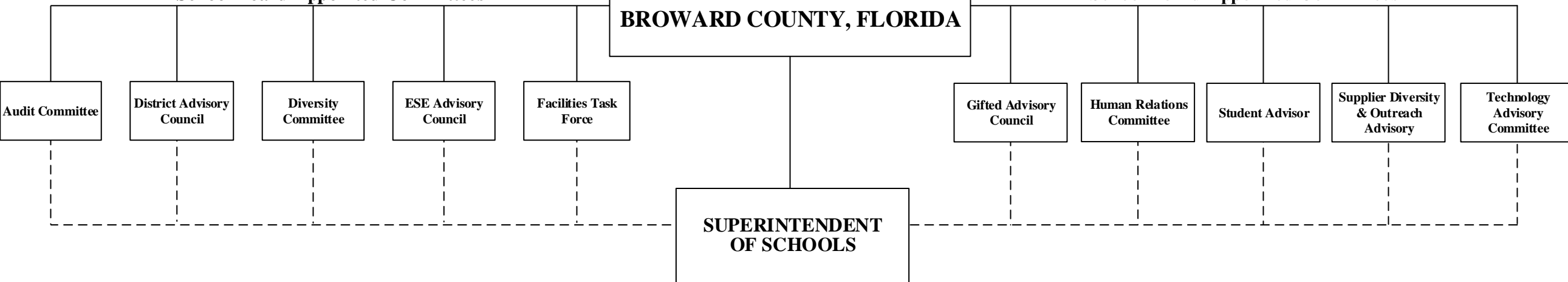
Funding from sources other than General Funds	New Position Job Description Exists N	Reporting Change from Different Division R
New Position Job Description Does Not Exist N ✓	Job Study on Existing Position J	Alignment Change within same Division A
Revision to Existing Job Description/Title Change ✓	Funding: C Capital FS Food Service <u>Direct Report</u> G General Gr Grant <u>Indirect Report</u>	

**BROWARD COUNTY
COMMUNITY**

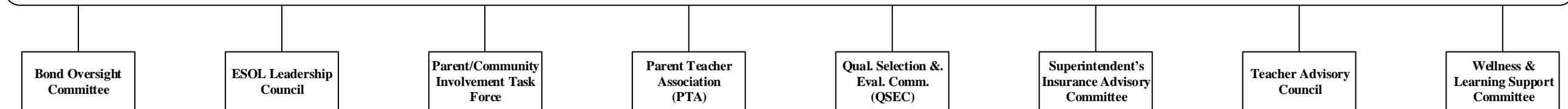
**THE SCHOOL BOARD OF
BROWARD COUNTY, FLORIDA**

School Board Appointed Committees

School Board Appointed Committees



PUBLIC STAKEHOLDERS





**THE SCHOOL BOARD OF BROWARD COUNTY, FL
2018-2019 ORGANIZATIONAL CHART**

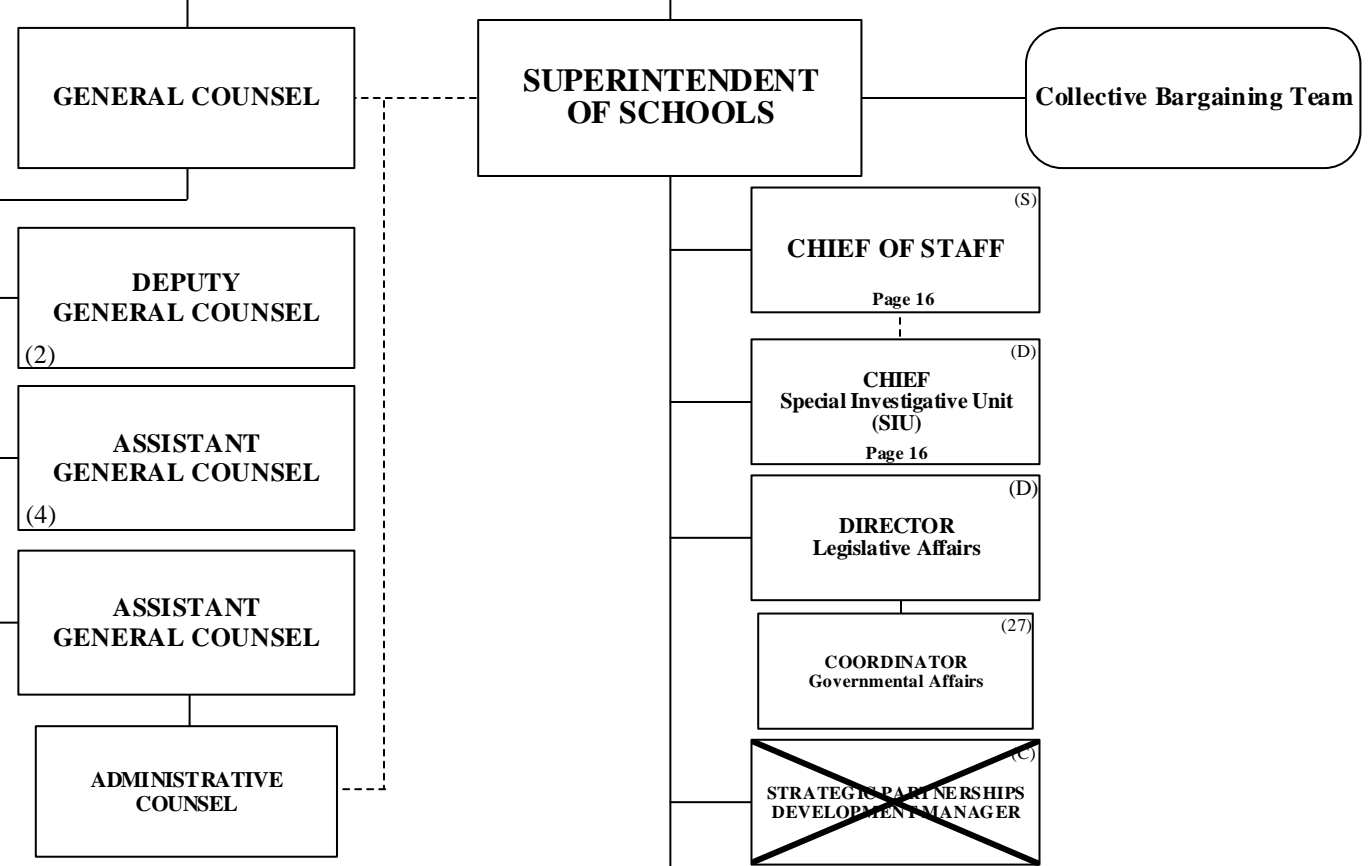
SUPERINTENDENT/GENERAL COUNSEL

**BROWARD COUNTY
COMMUNITY**

**THE SCHOOL BOARD OF
BROWARD COUNTY, FLORIDA**

Legend

Funding from sources other than General Funds	New Position Job Description Exists N	Reporting Change from Different Division R
New Position Job Description Does Not Exist N ✓	Job Study on Existing Position J	Alignment Change within same Division A
Revision to Existing Job Description/Title Change ✓	Funding: C Capital FS Food Service <u>Direct Report</u> G General Gr Grant <u>Indirect Report</u>	



- CHIEF SCHOOL PERFORMANCE & ACCOUNTABILITY OFFICER**
Page 3
- CHIEF ACADEMIC OFFICER**
Pages 4-7
- CHIEF STUDENT SUPPORT INITIATIVES**
Page 8
- CHIEF AUDITOR**
Page 9
- CHIEF FACILITIES OFFICER**
Page 10
- CHIEF FINANCIAL OFFICER**
Page 11
- CHIEF HUMAN RESOURCES & EQUITY OFFICER**
Page 12
- CHIEF INFORMATION OFFICER**
Page 13
- CHIEF PORTFOLIO SERVICES OFFICER**
Page 14
- CHIEF PUBLIC INFORMATION OFFICER**
Page 15
- CHIEF STRATEGY & OPERATIONS OFFICER**
Pages 17-18



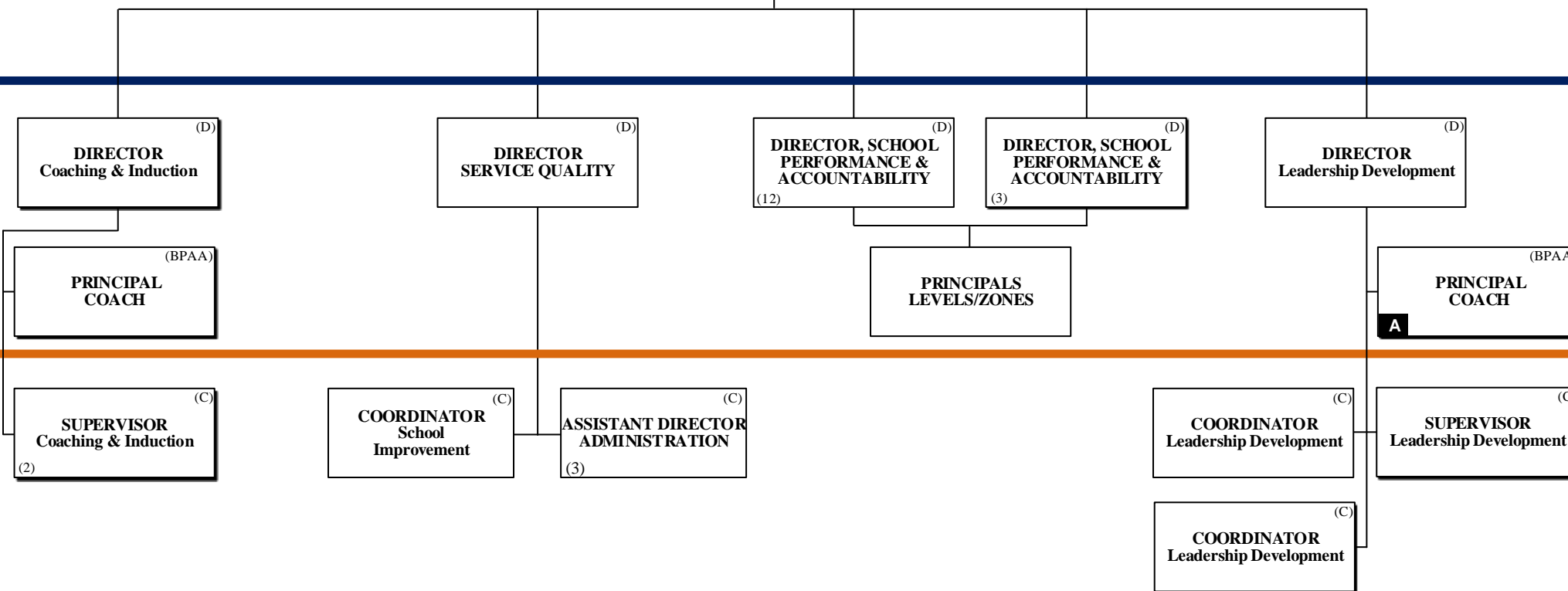
**THE SCHOOL BOARD OF BROWARD COUNTY, FL
2018-2019 ORGANIZATIONAL CHART**

**SCHOOL PERFORMANCE & ACCOUNTABILITY
OSPA**

THE SCHOOL BOARD OF BROWARD COUNTY, FLORIDA

SUPERINTENDENT OF SCHOOLS

CHIEF SCHOOL PERFORMANCE & ACCOUNTABILITY OFFICER (S)



PAY BANDS 'S' & 'E'

PAY BAND 'D'

PAY BANDS 'C' & 'B'

Legend

Funding from sources other than General Funds	New Position Job Description Exists N	Reporting Change from Different Division R
New Position Job Description Does Not Exist N ✓	Job Study on Existing Position J	Alignment Change with in same Division A
Revision to Existing Job Description/Title Change ✓	Funding: C Capital FS Food Service <u>Direct Report</u> G General Gr Grant <u>Indirect Report</u>	

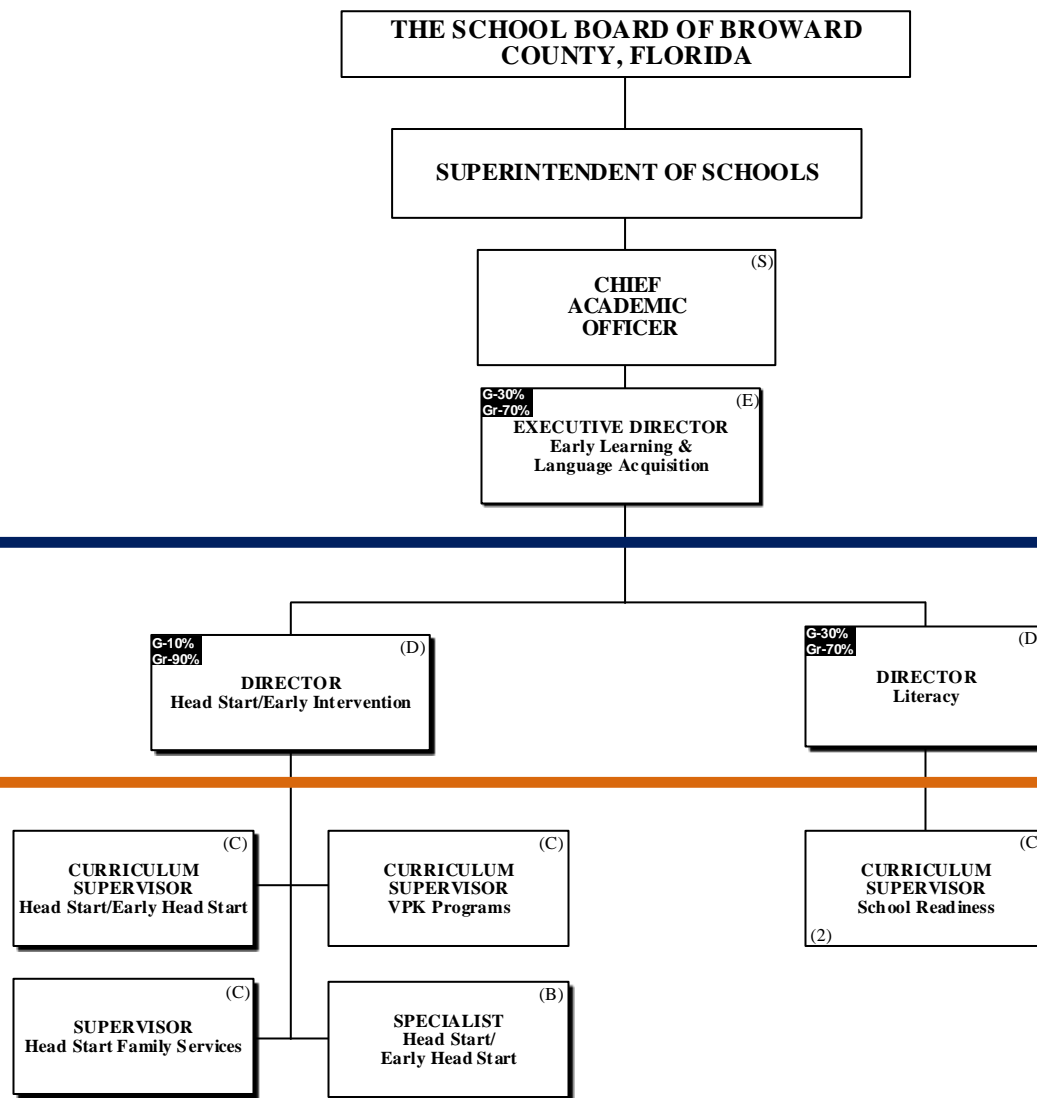


**THE SCHOOL BOARD OF BROWARD COUNTY, FL
2018-2019 ORGANIZATIONAL CHART**

**ACADEMICS
EARLY LEARNING & LANGUAGE ACQUISITION**

Legend

Funding from sources other than General Funds	New Position Job Description Exists N	Reporting Change from Different Division R
New Position Job Description Does Not Exist N ✓	Job Study on Existing Position J	Alignment Change with in same Division A
Revision to Existing Job Description/Title Change ✓	Funding: C Capital FS Food Service <u>Direct Report</u> G General Gr Grant <u>Indirect Report</u>	



PAY BANDS 'S' & 'E'

PAY BAND 'D'

PAY BANDS 'C' & 'B'

ACADEMICS EXCEPTIONAL STUDENT LEARNING SUPPORT



**THE SCHOOL BOARD OF BROWARD COUNTY, FL
2018-2019 ORGANIZATIONAL CHART**

Legend

Funding from sources other than General Funds	New Position Job Description Exists N	Reporting Change from Different Division R
New Position Job Description Does Not Exist N ✓	Job Study on Existing Position J	Alignment Change within same Division A
Revision to Existing Job Description/Title Change ✓	Funding: C Capital FS Food Service <u>Direct Report</u> G General Gr Grant <u>Indirect Report</u>	

THE SCHOOL BOARD OF BROWARD COUNTY, FLORIDA

SUPERINTENDENT OF SCHOOLS

CHIEF ACADEMIC OFFICER ^(S)

EXECUTIVE DIRECTOR ^(E)
Exceptional Student Learning Support

PAY BANDS 'S' & 'E'

DIRECTOR ^(D)
Exceptional Student Learning Support (Pre-K/Elementary)

DIRECTOR ^(D)
Exceptional Student Learning Support (Secondary)

DIRECTOR ^(D)
Exceptional Student Learning Support Services

PAY BAND 'D'

CURRICULUM SUPERVISOR ^(C)
Autism Spectrum Disorder

CURRICULUM SUPERVISOR ^(C)
Emotional/Behavioral Disabilities

CURRICULUM SUPERVISOR ^(C)
DHH/Visually Impaired

CURRICULUM SUPERVISOR ^(C)
Behavior

DISTRICT COORDINATOR ^(C)
Due Process

DISTRICT COORDINATOR ^(C)
Due Process

SUPERVISOR ^(C)
FL Diagnostic & Learning Resource System

CURRICULUM SUPERVISOR ^(C)
Intellectual Disabilities

SPECIALIST ^(B)
Deaf and Hard of Hearing Charter Schools

CURRICULUM SUPERVISOR ^(C)
Exceptional Student Learning Support

DISTRICT COORDINATOR ^(C)
Psychological Services
⁽³⁾

DISTRICT COORDINATOR ⁽²⁷⁾
Medicaid

CURRICULUM SUPERVISOR ^(C)
Preschool ESLSE

CURRICULUM SUPERVISOR ^(C)
Specific Learning Disabilities

SPECIALIST ^(B)
Visually Impaired Hospital Homebound/Private Schools

SUPERVISOR ^(C)
ESLSE Transition Services

DISTRICT COORDINATOR ^(C)
Speech-Language Physically Impaired

DISTRICT COORDINATOR ^(C)
Severely Emotionally Disturbed Network

MANAGER ⁽²⁶⁾
SSS/ESLSE Electronic Management System EZ IEP

PAY BANDS 'C' & 'B'



ACADEMICS INSTRUCTION & INTERVENTIONS

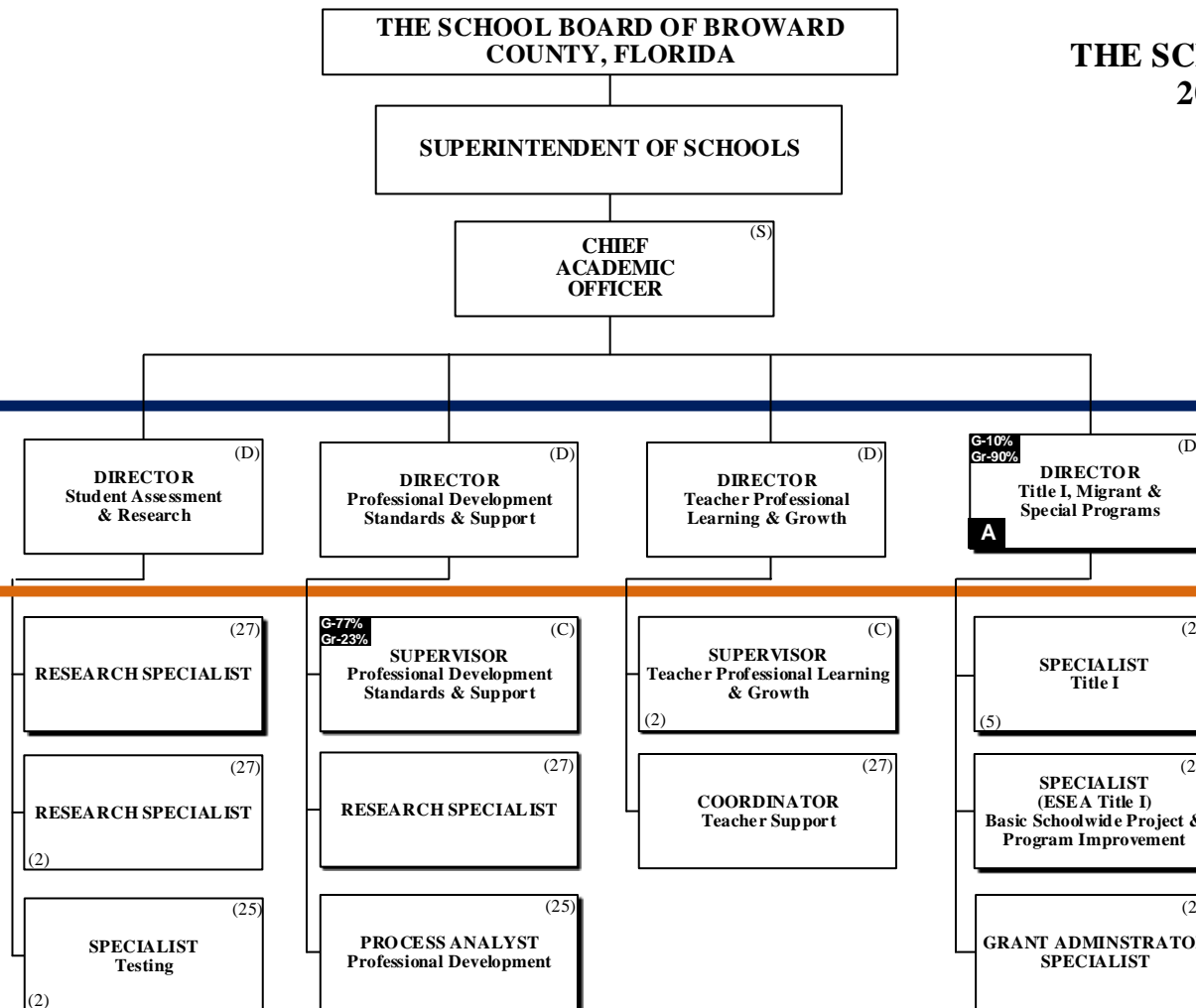
**THE SCHOOL BOARD OF BROWARD COUNTY, FL
2018-2019 ORGANIZATIONAL CHART**

Legend

Funding from sources other than General Funds N	New Position Job Description Exists N	Reporting Change from Different Division R
New Position Job Description Does Not Exist N ✓	Job Study on Existing Position ✍	Alignment Change within same Division A
Revision to Existing Job Description/Title Change ✓		

Funding:

C Capital	FS Food Service	<u>Direct Report</u>
G General	Gr Grant	<u>Indirect Report</u>



PAY BANDS 'S' & 'E'

PAY BAND 'D'

PAY BANDS 'C' & 'B'



ACADEMICS INSTRUCTION & INTERVENTIONS

**THE SCHOOL BOARD OF BROWARD COUNTY, FL
2018-2019 ORGANIZATIONAL CHART**

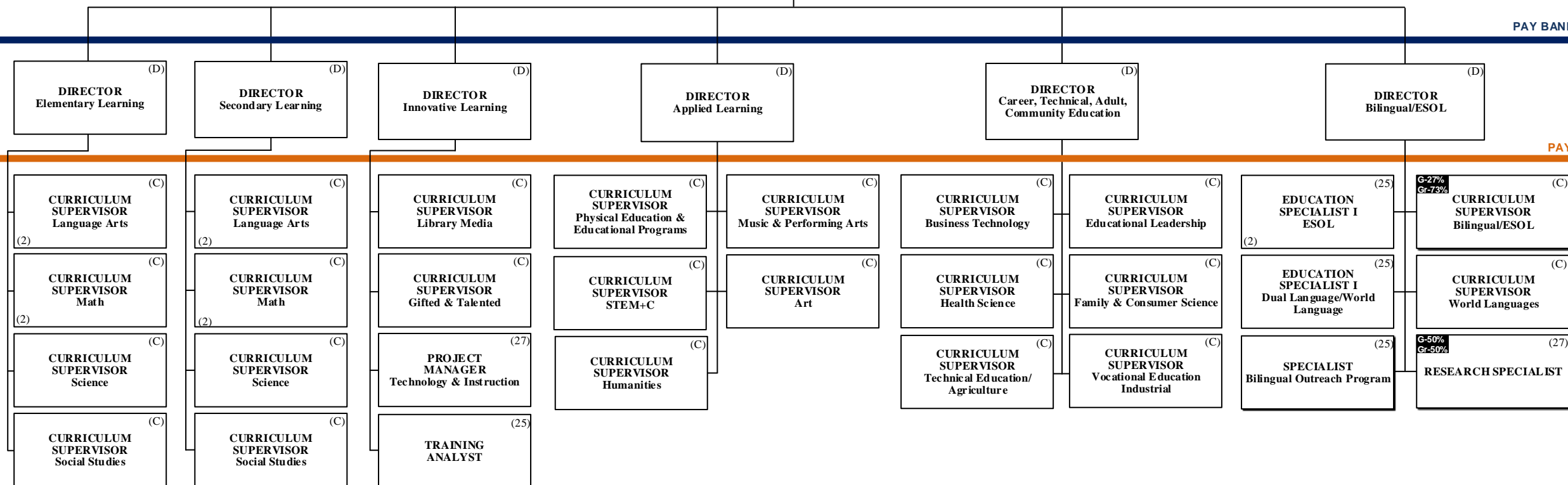
THE SCHOOL BOARD OF BROWARD
COUNTY, FLORIDA

SUPERINTENDENT OF SCHOOLS

CHIEF
ACADEMIC
OFFICER (S)

Legend

Funding from sources other than General Funds N	New Position Job Description Exists N	Reporting Change from Different Division R
New Position Job Description Does Not Exist N ✓	Job Study on Existing Position N	Alignment Change with in same Division A
Revision to Existing Job Description/Title Change ✓		
Funding:		
C Capital	FS Food Service	Direct Report
G General	Gr Grant	Indirect Report



PAY BANDS 'S' & 'E'

PAY BAND 'D'

PAY BANDS 'C' & 'B'

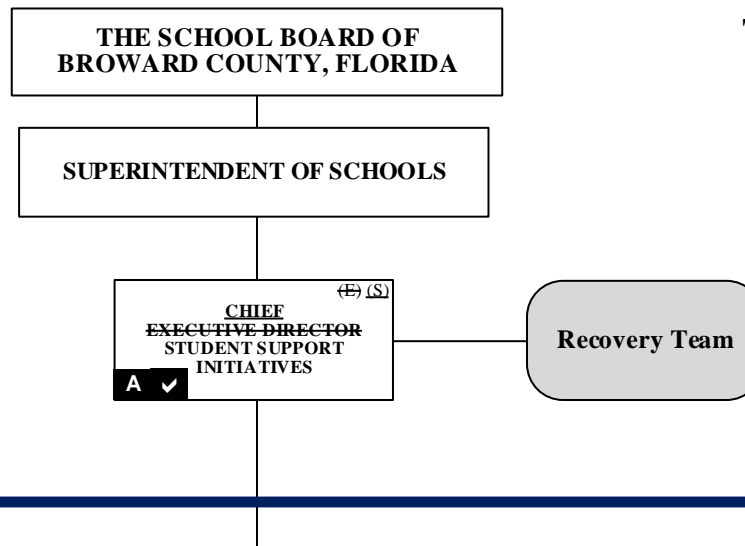


STUDENT SUPPORT INITIATIVES

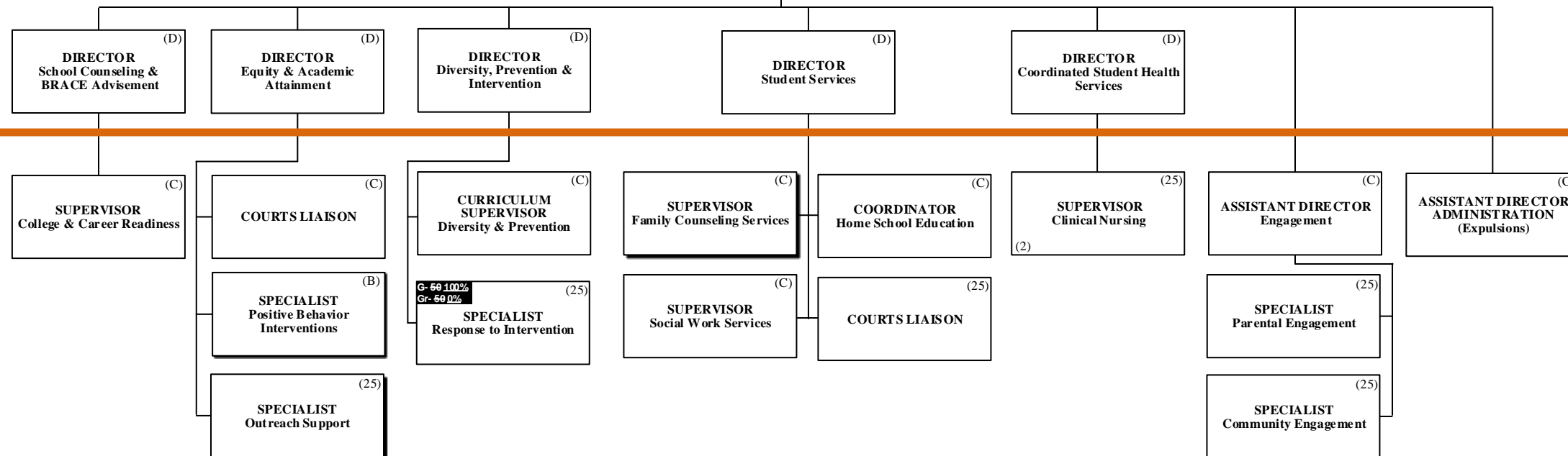
THE SCHOOL BOARD OF BROWARD COUNTY, FL 2018-2019 ORGANIZATIONAL CHART

Legend

Funding from sources other than General Funds	New Position Job Description Exists N	Reporting Change from Different Division R
New Position Job Description Does Not Exist N ✓	Job Study on Existing Position J	Alignment Change with in same Division A
Revision to Existing Job Description/Title Change ✓	Funding:	
	C Capital	FS Food Service
	G General	Gr Grant
	Direct Report	
	Indirect Report	



PAY BANDS 'S' & 'E'



PAY BAND 'D'

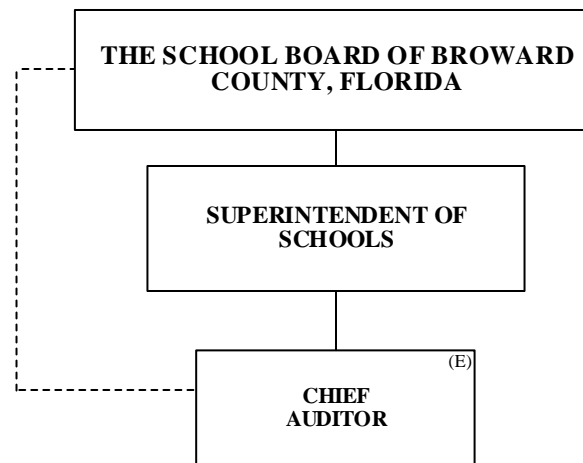
PAY BANDS 'C' & 'E'



**THE SCHOOL BOARD OF BROWARD COUNTY, FL
2018-2019 ORGANIZATIONAL CHART**

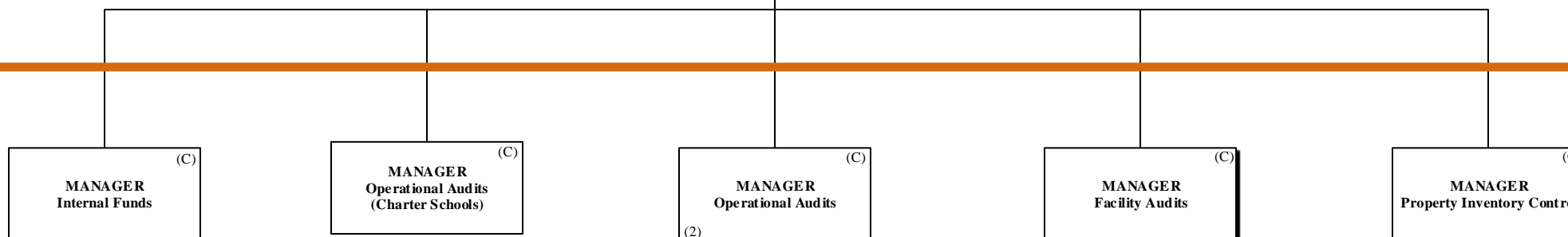
Legend		
Funding from sources other than General Funds N	New Position Job Description Exists N	Reporting Change from Different Division R
New Position Job Description Does Not Exist N ✓	Job Study on Existing Position A	Alignment Change within same Division A
Revision to Existing Job Description/Title Change ✓	Funding: C Capital FS Food Service <u>Direct Report</u> G General Gr Grant <u>Indirect Report</u>	

AUDITOR



PAY BANDS 'S' & 'E'

PAY BAND 'D'



PAY BANDS 'C' & 'B'



FACILITIES

THE SCHOOL BOARD OF BROWARD COUNTY, FLORIDA

THE SCHOOL BOARD OF BROWARD COUNTY, FL
2018-2019 ORGANIZATIONAL CHART

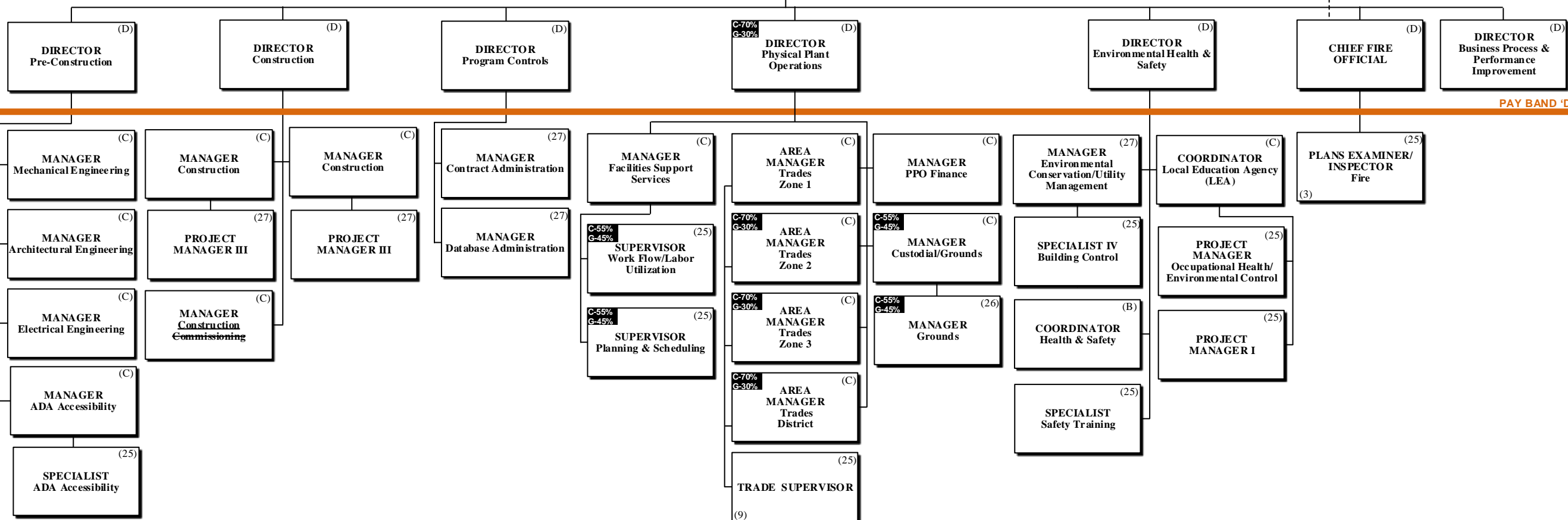
Legend

Funding from sources other than General Funds	New Position Job Description Exists N	Reporting Change from Different Division R
New Position Job Description Does Not Exist N ✓	Job Study on Existing Position J	Alignment Change within same Division A
Revision to Existing Job Description/Title Change ✓	Funding: C Capital FS Food Service <u>Direct Report</u> G General Gr Grant <u>Indirect Report</u>	

SUPERINTENDENT OF SCHOOLS

CHIEF FACILITIES OFFICER (S)

PAY BANDS 'S' & 'E'



PAY BAND 'D'

ESMAB PAY BANDS 'C' & 'B'
TSP PAY GRADES 25-28



THE SCHOOL BOARD OF BROWARD COUNTY, FL 2018-2019 ORGANIZATIONAL CHART

FINANCIAL MANAGEMENT

THE SCHOOL BOARD OF BROWARD COUNTY, FLORIDA

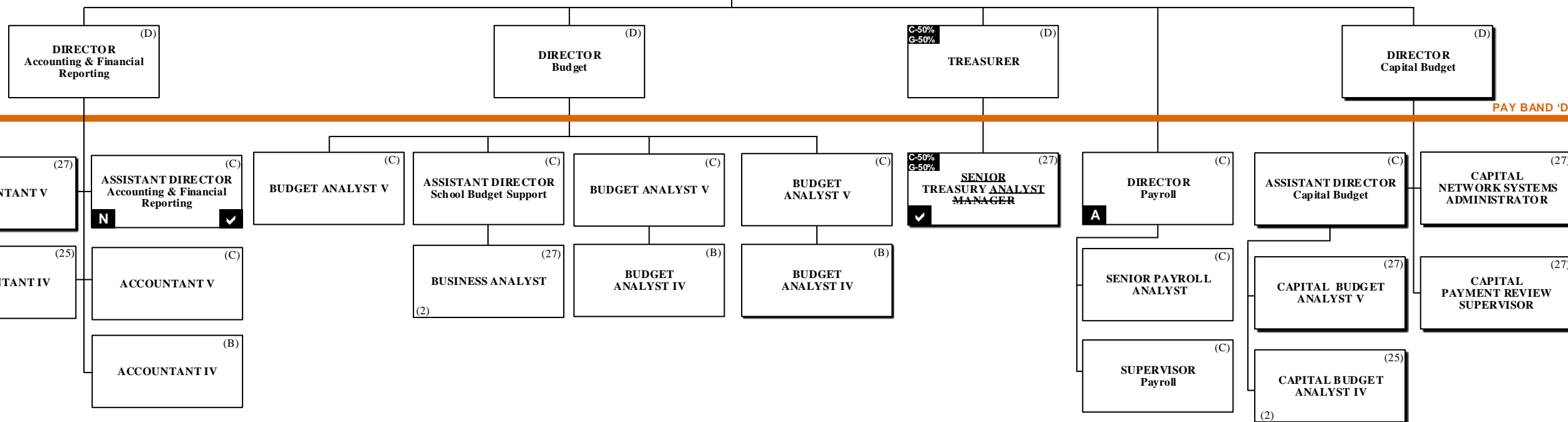
SUPERINTENDENT OF SCHOOLS

C-20%
G-80%
CHIEF FINANCIAL OFFICER (CFO) (S)

Legend

Funding from sources other than General Funds	New Position Job Description Exists N	Reporting Change from Different Division R
New Position Job Description Does Not Exist N ✓	Job Study on Existing Position J	Alignment Change with in same Division A
Revision to Existing Job Description/Title Change ✓	Funding:	
	C Capital	FS Food Service
	G General	Gr Grant
	Direct Report	
	Indirect Report	

PAY BANDS 'S' & 'E'



PAY BAND 'D'

ESMAB PAY BANDS 'C' & 'B'
TSP PAY GRADES 25-28

HUMAN RESOURCES & EQUITY

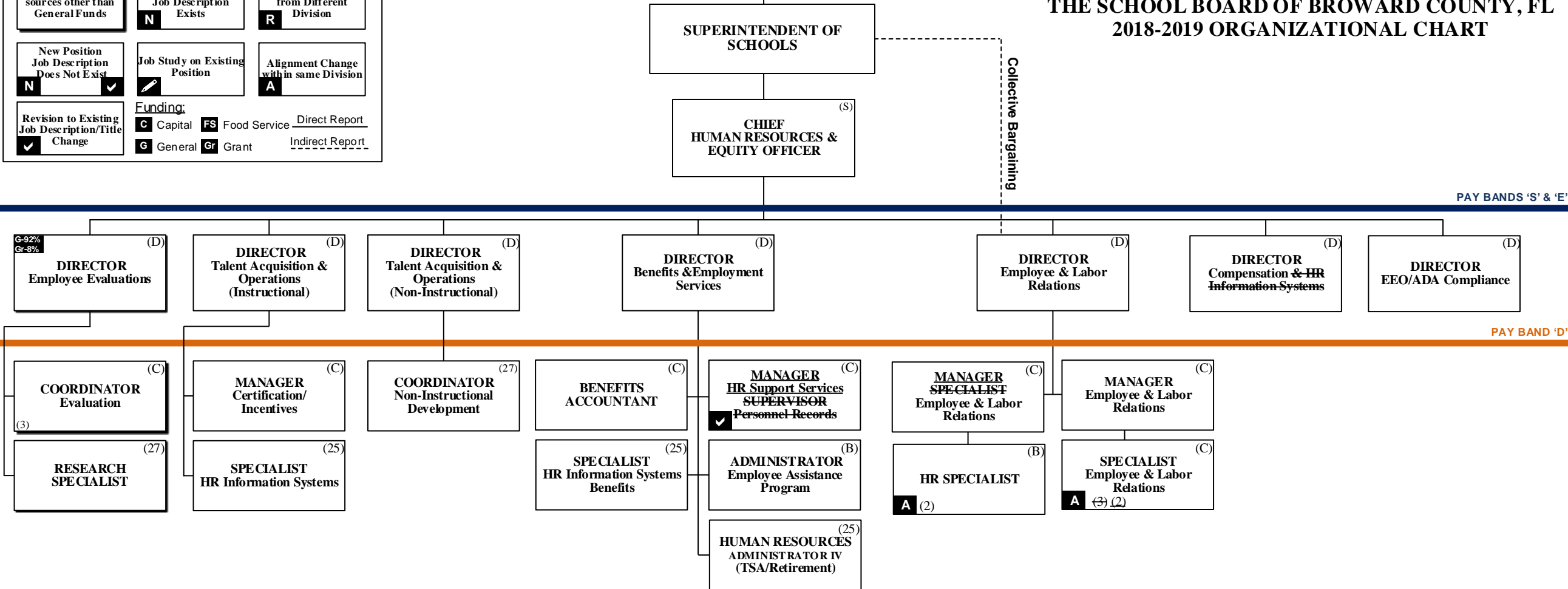


THE SCHOOL BOARD OF BROWARD COUNTY, FLORIDA

THE SCHOOL BOARD OF BROWARD COUNTY, FL
2018-2019 ORGANIZATIONAL CHART

Legend

Funding from sources other than General Funds	New Position Job Description Exists N	Reporting Change from Different Division R
New Position Job Description Does Not Exist N ✓	Job Study on Existing Position J	Alignment Change within same Division A
Revision to Existing Job Description/Title Change ✓	Funding: C Capital FS Food Service <u>Direct Report</u> G General Gr Grant <u>Indirect Report</u>	



PAY BANDS 'S' & 'E'

PAY BAND 'D'

ESMAB PAY BANDS 'C' & 'B'
TSP/PBA PAY GRADES 25-28



INFORMATION & TECHNOLOGY

THE SCHOOL BOARD OF BROWARD COUNTY, FL 2018-2019 ORGANIZATIONAL CHART

Legend

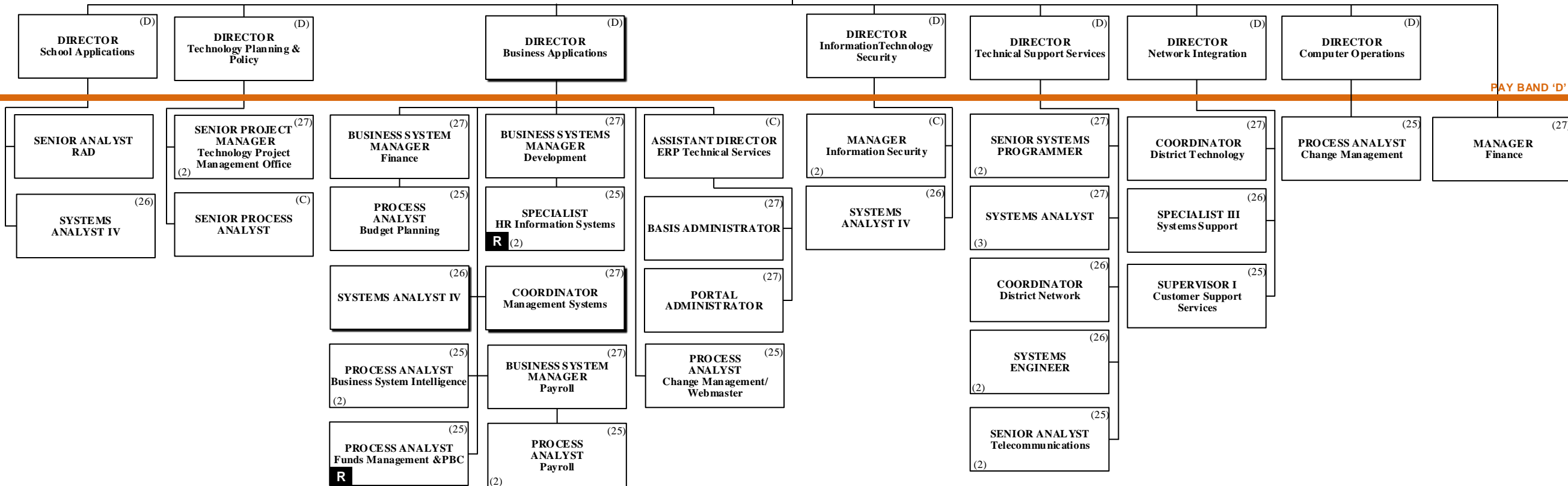
Funding from sources other than General Funds	New Position Job Description Exists N	Reporting Change from Different Division R
New Position Job Description Does Not Exist N ✓	Job Study on Existing Position J	Alignment Change within same Division A
Revision to Existing Job Description/Title Change ✓	Funding: C Capital FS Food Service <u>Direct Report</u> G General Gr Grant <u>Indirect Report</u>	

THE SCHOOL BOARD OF BROWARD COUNTY, FLORIDA

SUPERINTENDENT OF SCHOOLS

CHIEF INFORMATION OFFICER (S)

PAY BANDS 'S' & 'E'



PAY BAND 'D'

ESMAB PAY BANDS 'C' & 'B'
TSP PAY GRADES 25-28



**THE SCHOOL BOARD OF BROWARD COUNTY, FL
2018-2019 ORGANIZATIONAL CHART**

PORTFOLIO SERVICES

THE SCHOOL BOARD OF BROWARD COUNTY, FLORIDA

SUPERINTENDENT OF SCHOOLS

CHIEF PORTFOLIO SERVICES OFFICER (E)

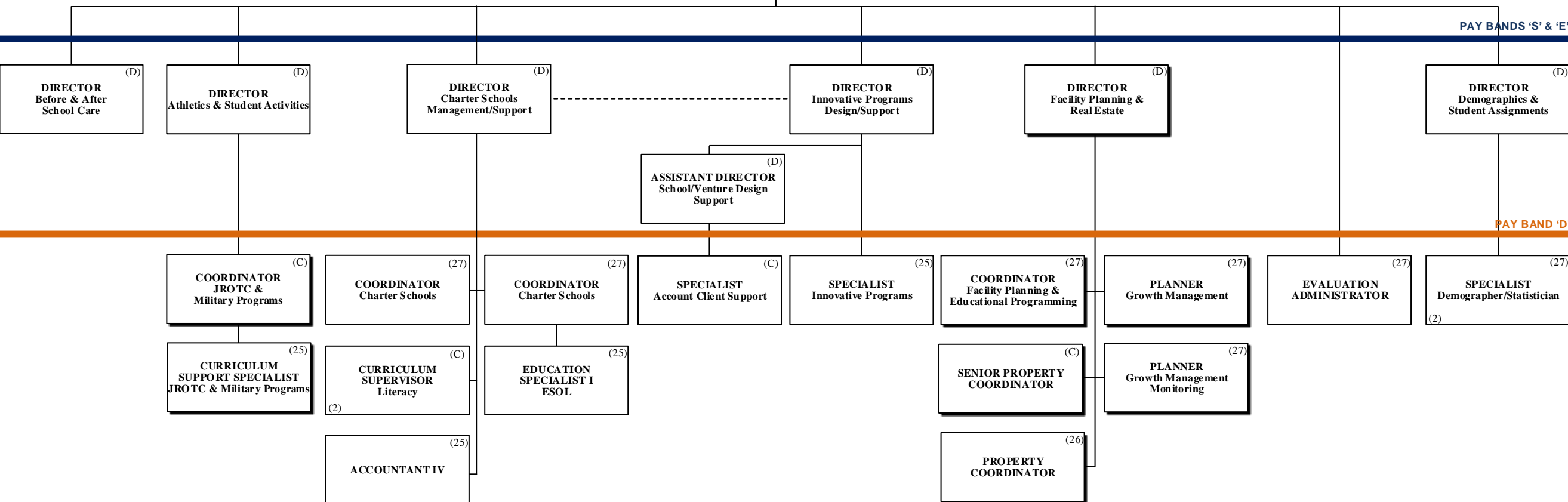
Legend

Funding from sources other than General Funds	New Position Job Description Exists N	Reporting Change from Different Division R
New Position Job Description Does Not Exist N ✓	Job Study on Existing Position J	Alignment Change within same Division A
Revision to Existing Job Description/Title Change ✓	Funding:	
	C Capital	FS Food Service <u>Direct Report</u>
	G General	Gr Grant <u>Indirect Report</u>

PAY BANDS 'S' & 'E'

PAY BAND 'D'

ESMAB PAY BANDS 'C' & 'B'
TSP PAY GRADES 25-28





**THE SCHOOL BOARD OF BROWARD COUNTY, FL
2018-2019 ORGANIZATIONAL CHART**

PUBLIC INFORMATION

THE SCHOOL BOARD OF BROWARD COUNTY, FLORIDA

SUPERINTENDENT OF SCHOOLS

CHIEF PUBLIC INFORMATION OFFICER (E)

DIRECTOR/GENERAL MANAGER (D)
Broward Educational Communication Network (BECON)

DIRECTOR (D)
Marketing & Strategic Communications

DIRECTOR (D)
Mass Media & Community Relations

(28)
BECON STATION MANAGER

(26)
MANAGER II Engineering

(26)
MANAGER of GRAPHICS

~~(B)
MANAGER Integrated Marketing Communications & Social Media~~

(27)
COORDINATOR District Community Relations

(26)
COORDINATOR BECON Public Relations & Fundraising

(26)
MANAGER II Production

(25)
SPECIALIST Communications Public Affairs
(2)

~~(25)
COORDINATOR Old Dillard Museum~~

(25)
SPECIALIST Mass Media
N (2)

(B)
MANAGER II School Services

PAY BANDS 'S' & 'E'

Crisis and Recovery Communications

Purpose: To enhance the District's capacity to respond in a timely and accurate manner to the unprecedented number of public records requests, media requests and subpoenas related to the tragedy at Marjory Stoneman Douglas High School. In addition, the current situation requires increased communications effort throughout the entire District.

Resources: Crisis Communications Experts and Consultants, Public Information Office, Legislative Affairs Department, Council of Great City Schools (Communications staff on loan from other districts)

Legend

Funding from sources other than General Funds	New Position Job Description Exists N	Reporting Change from Different Division R
New Position Job Description Does Not Exist N	Job Study on Existing Position P	Alignment Change within same Division A
Revision to Existing Job Description/Title Change ✓	Funding: C Capital FS Food Service Direct Report G General Gr Grant Indirect Report	



CHIEF OF STAFF

THE SCHOOL BOARD OF BROWARD COUNTY, FLORIDA

THE SCHOOL BOARD OF BROWARD COUNTY, FL 2018-2019 ORGANIZATIONAL CHART

Legend

Funding from sources other than General Funds	New Position Job Description Exists N	Reporting Change from Different Division R
New Position Job Description Does Not Exist N ✓	Job Study on Existing Position J	Alignment Change within same Division A
Revision to Existing Job Description/Title Change ✓	Funding:	
	C Capital	FS Food Service
	G General	Gr Grant
	Direct Report	
	Indirect Report	

SUPERINTENDENT OF SCHOOLS

CHIEF OF STAFF (S)

PAY BANDS 'S' & 'E'

DIRECTOR District Administrative Services (D) N ✓

CHIEF BUILDING OFFICIAL (D)

DIRECTOR Risk Management (D)

CHIEF Special Investigative Unit (SIU) (D)

MAJOR SIU Operations/ Investigations (D)

PAY BAND 'D'

ASSISTANT CHIEF BUILDING OFFICIAL Inspections (27)

SENIOR ENGINEER (27)

ASSISTANT CHIEF BUILDING OFFICIAL Plans (27) N

MANAGER Emergency Management (B)

PROGRAM ADMINISTRATOR Workers Compensation (C)

PERSONNEL ADMINISTRATOR Professional Standards (C)

DETECTIVE SIU (Schools - 11) (Personnel - 9) (20)

PLANS EXAMINER/INSPECTOR Building (25) (4)

PLANS EXAMINER/INSPECTOR Plumbing (25) (2)

SENIOR PLANS EXAMINER (26) A

MANAGER Workers Compensation Claims (C)

MANAGER Workers Compensation Medical Consumerism (C)

MANAGER Workers Compensation Information Analytics (B)

SCHOOL SAFETY COORDINATOR (25)

PLANS EXAMINER/INSPECTOR Mechanical (25) (2)

PLANS EXAMINER/INSPECTOR Electrical (25) (2)

SENIOR PLANS EXAMINER Mechanical Structural (26) A

SUPERVISOR Workers Compensation Claims (B)

SUPERVISOR Workers Compensation Medical Case Management (B)

SPECIALIST Workers Compensation Stay-at-Work/Return-to-Work (B)

ADJUSTER Workers Compensation Claims (B) (8)

CASE MANAGER Workers Compensation Medical Case (B) (8)

PLANS EXAMINER/INSPECTOR Roofing (25) (2)

Revisions to the SIU organization will be forthcoming pending the current active assessment effort regarding district safety and security needs.

ESMAB PAY BANDS 'C' & 'B'
TSP PAY GRADES 25-28



**THE SCHOOL BOARD OF BROWARD COUNTY, FL
2018-2019 ORGANIZATIONAL CHART**

STRATEGY & OPERATIONS

THE SCHOOL BOARD OF BROWARD COUNTY, FLORIDA

SUPERINTENDENT OF SCHOOLS

CHIEF STRATEGY & OPERATIONS OFFICER (S)

EXECUTIVE DIRECTOR (E)
Strategic Initiative Management

DIRECTOR (D)
Business Support Center

DIRECTOR (D)
Grants Administration

DIRECTOR (D)
Performance Management

DIRECTOR (D)
Program Evaluation

MANAGER (27)
Budget

BUSINESS ANALYST (27)
(2)

SUPERVISOR I (26)
Printing Services

SENIOR MANAGER (C)
Grant Programs

MANAGER (26)
Grant Programs Oversight
(2)

GRANTS ADMINISTRATOR (25)
Accountability & Reporting

COORDINATOR (C)
Performance Management

COORDINATOR (C)
Strategic Management

EVALUATION ADMINISTRATOR (27)

Legend

Funding from sources other than General Funds	New Position Job Description Exists N	Reporting Change from Different Division R
New Position Job Description Does Not Exist N ✓	Job Study on Existing Position J	Alignment Change within same Division A
Revision to Existing Job Description/Title Change ✓	Funding: C Capital FS Food Service <u>Direct Report</u> G General Gr Grant <u>Indirect Report</u>	

PAY BANDS 'S' & 'E'

PAY BAND 'D'

ESMAB PAY BANDS 'C' & 'B'
TSP PAY GRADES 25-28



THE SCHOOL BOARD OF BROWARD COUNTY, FL 2018-2019 ORGANIZATIONAL CHART

STRATEGY & OPERATIONS

THE SCHOOL BOARD OF BROWARD COUNTY, FLORIDA

SUPERINTENDENT OF SCHOOLS

CHIEF STRATEGY & OPERATIONS OFFICER (S)

EXECUTIVE DIRECTOR Student Transportation & Fleet Services (+)(E)

PAY BANDS 'S' & 'E'

DIRECTOR Food & Nutrition Services (D)

DIRECTOR Procurement & Warehousing Services (D)

PAY BAND 'D'

ASSISTANT DIRECTOR Food & Nutrition Services (C)

COORDINATOR Food & Nutrition Services (C)

ASSISTANT DIRECTOR MANAGER Procurement Compliance (C)

MANAGER Supplier Diversity & Outreach Program (C) C-50% G-50%

MANAGER Warehousing Services (B)

ASSISTANT DIRECTOR Transportation Support Services (C)

MANAGER I Vehicle Maintenance (C)

MANAGER Transportation Operations (C)

SUPERVISOR Food & Nutrition Services Information Systems (B)

FINANCE MANAGER Food & Nutrition Services (C)

MANAGER Strategic Sourcing (C) A

MANAGER Construction Sourcing (C) A

SENIOR PROCESS ANALYST (C)

COORDINATOR Supplier Diversity & Outreach Program (26)

MANAGER II Transportation Terminal (2) (C)

SUPERVISOR Vehicle Maintenance (25) N (+)(2)

MANAGER Centralized Routing (C)

AREA SUPERVISOR Food & Nutrition Services (11) (B)

PROGRAM MANAGER Nutrition, Education & Training (25)

PURCHASING AGENT IV (25)

PURCHASING AGENT IV Construction (25)

SENIOR PROCESS ANALYST (C)

COORDINATOR Supplier Diversity & Outreach Program (Compliance) (26) C-50% G-50%

ACCOUNTANT V (27)

DATA ANALYST Transportation (25)

AREA SUPERVISOR Special Programs Food & Nutrition Services (2) (B)

SUPERVISOR Food & Nutrition Services Equipment & Supplies (25)

PURCHASING AGENT IV (25)

PROCESS ANALYST Procurement & Warehousing Services (2) (25)

PROCESS ANALYST MWBE Construction (25)

PROCESS ANALYST MWBE Construction (25)

MANAGER I Transportation Terminal (2) (B)

SUPERVISOR Special Needs Transportation (25)

DATA ANALYST Transportation (25)

ESMAB PAY BANDS 'C' & 'B'
TSP PAY GRADES 25-28